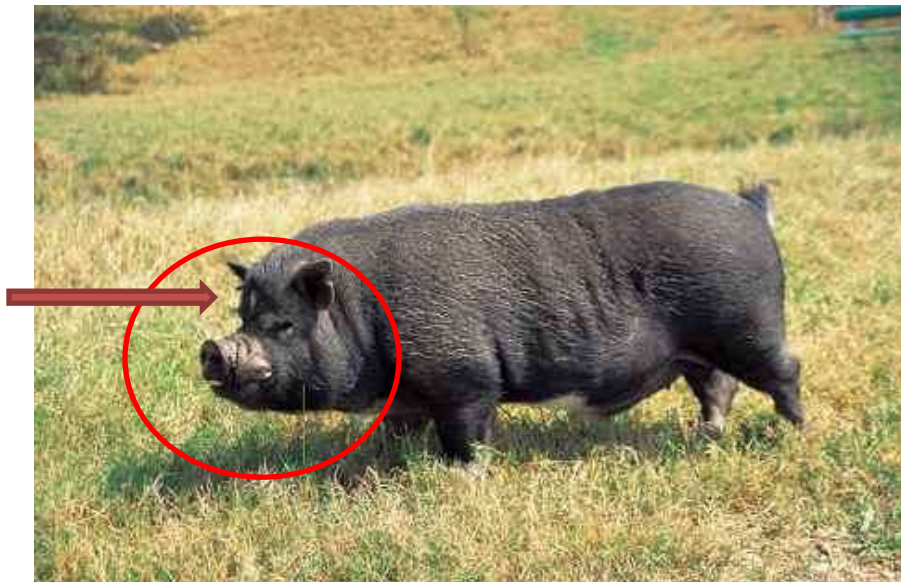


## Noses, Snouts & Faces



All hogs breeds have distinct breed characteristics and standards or what is particular for their breed. Red Wattle hogs **DO NOT** have swooped noses or faces. Otherwise known as dish face. Their noses or snouts fall gently from the forehead with a small curve. The second picture is an example of a nose and face that is not acceptable for the breed or registration. It's a trait that may not be recognizable in small piglets.